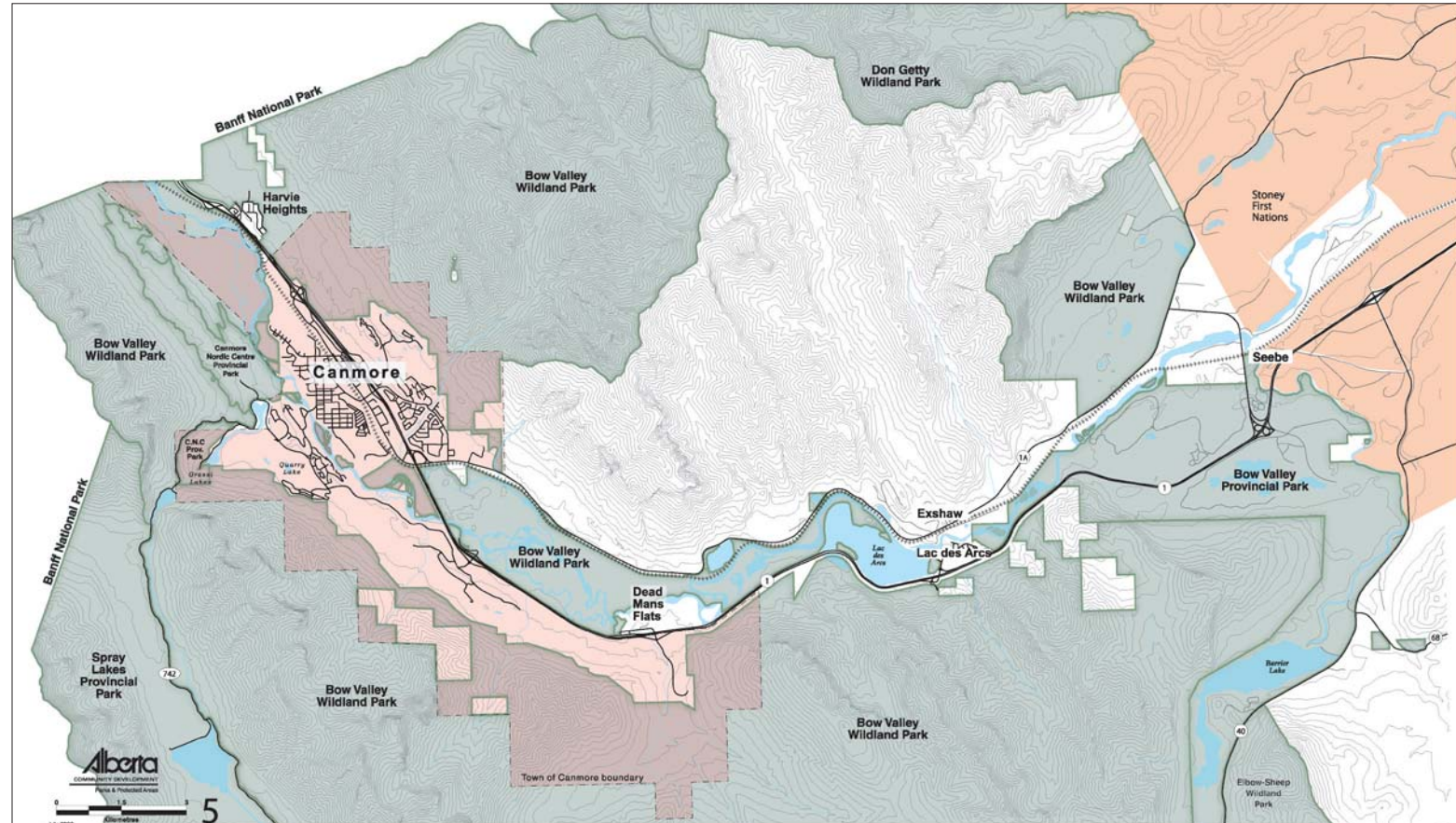


Focus Area

The lands between the height of land on either side of the Bow Corridor from the Banff National Park eastern boundary east to Seebe. Issues related to lands outside the boundaries of this focus area are considered where there is potential for impact on the Bow Corridor.

Objectives

The role of BCEAG is an advisory and coordinating group that makes recommendations for actions/decisions to the member organizations.



- ✓ Facilitates interagency partnerships in managing environmental and resource issues in the Bow Corridor
- ✓ Coordinates and integrates environmental and resource issues in the corridors
- ✓ Facilitates a coordinated one-window approach on dealing with cross-agency issues
- ✓ Informs and advises member agencies on resolving environmental and resource management issues
- ✓ On a project-by-project basis utilizes public education and involvement as management tools

Completed Projects

- ✓ **Geographical Information System Base Map:**
covering the length of the Bow Valley from Lake Louise to Seebe. (1998)
- ✓ **Wildlife Corridors and Habitat Patches:**
Delineated wildlife corridors and habitat patches within the Bow Valley. (1998)
- ✓ **Guidelines for Human Use within Wildlife Corridors:**
Consolidates human use on trails impacting critical wildlife areas. (1999)
- ✓ **Education and Implementation Recommendations:**
Public education and implementation of trail modifications. (2001)
- ✓ **Wildlife and Human Use Monitoring Recommendations:**
A coordinated approach to wildlife and human use monitoring in the Bow Valley. (2001)
- ✓ **Wildland Urban Fire Interface:**
Identified high fire hazard areas within the Bow Valley. (2001)
- ✓ **Recreational Opportunities Working Group:**
Clarified trail opportunities in the Bow Valley associated with Wildlife Corridors. (2002)
- ✓ **Regional Transportation Study Strategy:**
A strategy for a regional transportation system, including inter-municipal transportation services. (2003)

Who to Contact

- Town of Canmore**
Canmore (403) 678-1510
- Town of Banff**
Banff (403) 762-1215
- Municipal District of Bighorn**
Exshaw (403) 673-3611
- Alberta Community Development**
Canmore (403) 678-5508
- Alberta Sustainable Resource Development**
Canmore (403) 678-5508
- Alberta Environment**
Calgary (403) 297-5647
- Banff National Park of Canada**
Banff (403) 762-1510
- Alberta Economic Development**
Edmonton (780) 427-6676

BCEAG

Bow Corridor Ecosystem Advisory Group



Town of Banff
Town of Canmore
Municipal District of Bighorn
Province of Alberta
Banff National Park of Canada

An Interagency Partnership
Coordinating Environmental and
Resource Management Issues
in the Bow Valley